



# HPS MILLENNIUM™ E

Medium Voltage  
Distribution Transformer  
- Up to 34.5kV





# HPS Millennium™ E Medium Voltage Transformer



## HPS Millennium™ E

Hammond Power Solutions (HPS) is the industry leading manufacturer of standard and custom dry-type transformers in North America. Every HPS product is built with the quality and dependability you count on.

HPS Millennium™ medium voltage distribution transformers are designed for many demanding and diverse applications, while minimizing both installation and maintenance costs. Coils are precision wound with copper or aluminum conductors using either barrel or comb wound designs with a full vacuum-pressure impregnation (VPI) insulation system.

With three phase ratings up to 15MVA, 34.5kV, 175kV BIL and single phase to 5MVA, they feature the newest technology and manufacturing processes.

To service all of your medium voltage needs, HPS Millennium™ G is also available for applications requiring voltages up to 5kV. For more information on HPS Millennium™ G (catalog no. MILGMED), please contact us or visit the HPS Website.

## Support & Resources



### Current Calculator:

Calculate the Amps, Volts, or kVA of a transformer. Visit the "Online Tools" area of the HPS website.



### Fast On-Site Response:

On-site technicians are available to assist with any technical problems or issues that cannot be resolved over the phone.



### Live Telephone Technical Support:

Our inside sales team is available to quickly answer your questions. They are technically trained and able to answer most questions right over the phone.



### Easy-To-Access Installation Manuals:

All transformer installation manuals are conveniently located on our website so you can access them anywhere, anytime.



### Online Technical Support:

Get answers to frequently asked questions, troubleshooting tips and instruction sheets by visiting the "Technical Support" area of the HPS website.

## Applications

HPS Millennium™ E is suitable for any commercial, industrial, manufacturing or production process application. They can be offered for a variety of environmental conditions and built to meet the most onerous duty.

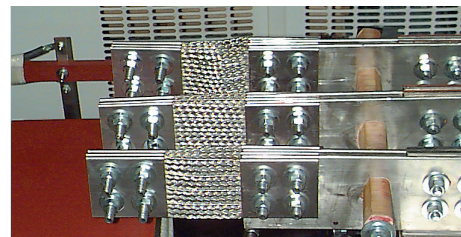
- Industrial
- Commercial
- Data Centers
- Renewable Energy



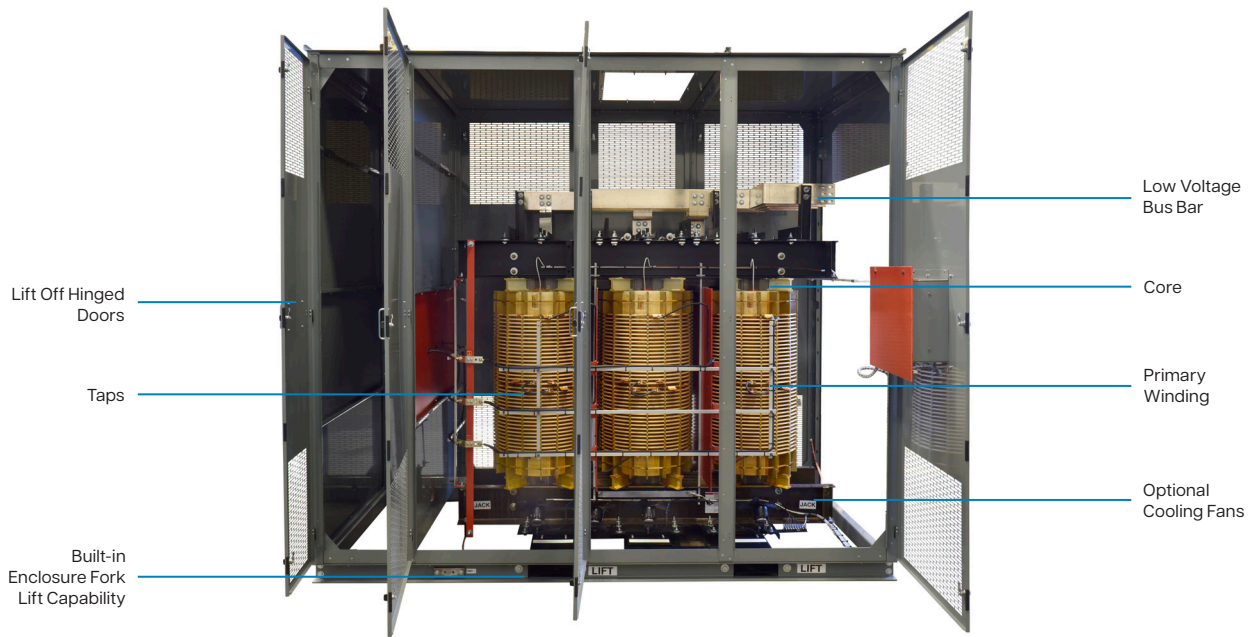
Built-in enclosure fork lift capability



Low voltage bus bar



Flexible connectors



## Features

### Core & Coil Construction:

- Manufactured from quality non-aging, cold rolled, silicon steel laminations  
Cores are precision cut to close tolerances to eliminate gaps and improve performance
- Core is coated to prevent the ingress of moisture
- Precision wound with copper or aluminum conductors that are electrically balanced to minimize axial forces during short-circuit conditions
- Wire or foil conductors for optimum performance for the application
- Robust interface between core & coils for better short circuit performance
- Utilize both barrel or comb wound construction techniques
- Available with multiple termination configurations: stubs-up, coordinated bus-to-end
- Vibration isolation pads to minimize noise

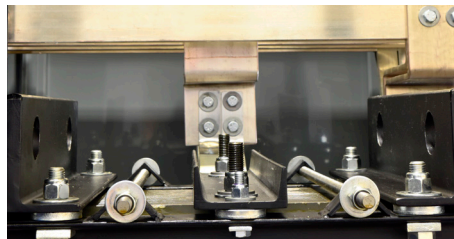
## Benefits

- Meets the minimum efficiency standards mandated in DOE 10 CFR PART 431 (effective Jan 1st 2016), NRCAN 2019 SOR/2018-201 Amd. 14, ON Reg 404/12 (effective Jan 1st 2018), NMX-J-351-1-ANCE-2021\* (effective Aug 10th 2021) and exceeds CSA C802.2-12 resulting in increased dollar savings and positive societal/environmental payback
- Designed for indoor or outdoor applications
- VPI windings are mechanically durable for the most demanding environments typically found in mining, crane and other difficult mechanical applications.
- Minimal maintenance required beyond removing surface contaminants, such as dirt
- Can be energized immediately after installation
- Excellent resistance to short circuits
- Self-extinguishing in the unlikely event of fire
- Environmentally friendly

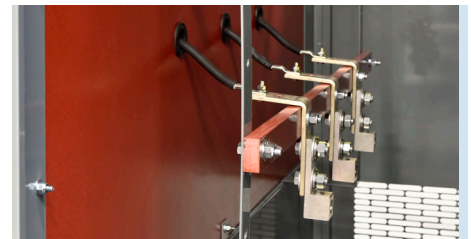
*\*HPS will be referring to the NMX-J-351-ANCE-2021 standard as NMX 2021*



Lift off hinged doors



Lifting eyes for core & coil assembly



Air terminal chamber (ATC)

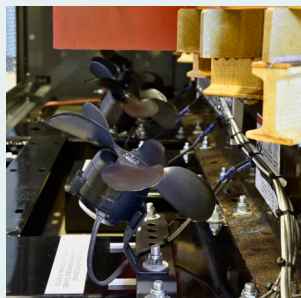
## Specifications & Accessories - Copper or Aluminum



**Infrared viewing window & custom enclosure finish**



**Lightning arrestors**



**Cooling**

### Standard Specifications

<b>kVA:</b>	225-2500kVA DOE 2016/NMX 2021 225-7500kVA (NRCAN 2019) others available upon request
<b>High Voltage (Primary):</b>	Up to 34.5 kV Class, up to 175 kV BIL Up to 150 kV BIL (BIL per CSA and IEEE/ANSI standards) Standard taps +/- 2.5%, +/- 5% Other options available upon request
<b>Low Voltage (Secondary):</b>	208Y/120V to 600Y/347V & 2.4-5kV up to 60kV BIL Higher BIL available upon request
<b>Frequency:</b>	60 Hz, others available upon request
<b>Insulation System:</b>	220°C (200°C for some lower kVA ratings)
<b>Enclosure Type:</b>	Type 1, 2, 3/3R, 4/4X or 12 available (others available upon request). HPS Type 3RE Plus enclosure <sup>1</sup> option available for improved outdoor performance. Lift off hinged doors for easy accessibility and quick removal if required. Built-in enclosure fork lift capability
<b>Enclosure Finish:</b>	ANSI 61 Grey Compliant with UL 50
<b>Neutral:</b>	Neutral terminal for field connection (on applicable units)
<b>Temperature Rise:</b>	150°C typical temperature rise, (optional 115°C & 80°C rise available)
<b>Termination:</b>	Front accessible separate high and low voltage terminals; connectors suitable for aluminum and copper are provided for easy cable installation.
<b>Impedance:</b>	3-7%, typically 5.75%
<b>Seismic:</b>	Seismically qualified according to the International Building Code (IBC) 2018, and the American Society of Civil Engineers ASCE 7-16 specifications, with the following design parameters: Spectral acceleration: SDS ≤2.0 g Importance factor: I <sub>p</sub> = 1.5 Attachment/height ratio: z/h = 0 OSHDP compliance available upon request
<b>Sound Level:</b>	Meets IEEE C57.12.01 (other sound level performance available)
<b>Altitude:</b>	Standard up to 1000 meters (de-rated above 1000 meters)
<b>Ambient:</b>	-20°C to 40°C (with de-rating possible from 40°C to 60°C, consult HPS)
<b>Duty:</b>	Special duty available upon request

### Optional Accessories:

- Forced air-cooling (or provisions for later)
- Heat exchanger/cooling for TENV units
- Lightning arrestors rated for system voltage (Station, Intermediate or Distribution)
- Grounding resistor
- Neutral Ground Monitor
- Thermal sensing & indication
  - Thermocouples
  - Thermometers (analog/digital)
  - Thermostat alarm / trip (N.O. /N.C. contacts)
- Current transformers
- Potential transformers
- Key interlock to prevent unauthorized access
- Electrostatic shielding
- Rated to handle non-linear loads
- Strip heater (powered from separate source)
- Surge protection devices
- Air terminal chamber
- Low voltage panel
- Coordinated bus-to-end
- Primary fused disconnects
- Infrared viewing windows

<sup>1</sup>For more details on our HPS Type 3RE Plus enclosure features please visit [https://americas.hammondpowersolutions.com/en/products/enclosure-types#3RE\\_enhancements](https://americas.hammondpowersolutions.com/en/products/enclosure-types#3RE_enhancements)



## Comparison Of Enclosures For Indoor & Outdoor Non-Hazardous Locations

		Indoor						Indoor/Outdoor						Submersible			
CSA C22.2 No. 94.2 Enclosure Type		1 <sup>a</sup>	2 <sup>a</sup>	5	12	12K	13	3	-	3R <sup>a</sup>	-	3S	-	4	4X	6	6P
NEMA 250 Enclosure Type		1 <sup>a</sup>	2 <sup>a</sup>	5	12	12K	13	3	3X	3R <sup>a</sup>	3RX <sup>a</sup>	3S	3SX	4	4X	6	6P
Equivalent IEC 60529 IP designation <sup>a</sup>		IP20	IP22	IP53	IP54	IP54	IP54	IP55	IP55	IP24	IP24	IP55	IP55	IP66	IP66	IP67	IP68
Provides degree of protection against these environmental conditions	Accidental contact with live parts	X	X	X	X	X	X	X	X	X	X	X	X	X	X	X	X
	Falling dirt	X	X	X	X	X	X	X	X	X	X	X	X	X	X	X	X
	Dripping and light splashing of non-corrosive liquids		X	X	X	X	X	X	X	X	X	X	X	X	X	X	X
	Circulating dust, lint, fibres and flyings <sup>d</sup>				X	X	X	X	X			X	X	X	X	X	X
	Settling dust, lint, fibres and flyings <sup>d</sup>			X	X	X	X	X	X			X	X	X	X	X	X
	Wind-blown dust							X	X			X	X	X	X	X	X
	Rain, snow and external formation of ice or sleet <sup>b</sup>							X	X	X	X	X	X	X	X	X	X
	External formation of ice or sleet											X	X				
	Hose down and splashing water													X	X	X	X
	Corrosion												X		X		X
	Occasional temporary submersion															X	X
	Occasional prolonged submersion																X
	Oil and coolant seepage				X	X	X										
	Oil and coolant seepage, spraying and splashing						X										

Notes:

a. - These enclosures may be ventilated

b. - External operating mechanism(s) is not required to operate when the enclosure is ice covered

c. - External operating mechanism(s) shall be operable when the enclosure is ice covered

d. - These fibres and flyings are non-hazardous and are not considered Class III type ignitable fibres or combustible flyings

e. - Since IEC 60529 does not specify degrees of protection for many conditions considered CSA C22.2 No. 94.2, the IEC classifications cannot be exactly equated to North American Type numbers. The North American Type numbers meet or exceed the test requirements for the associated IP classifications.

This table cannot be used to convert from IEC classifications to North American Type designations.

References: CSA C22.2 No. 94, CSA C22.1(CEC), NEMA 250, NEMA document - NEMA Enclosure Types

Disclaimer: This table is for quick comparison only. Please refer to appropriate standard for enclosure selection to your needs.

## Testing

All VPI Power transformers are tested at HPS prior to shipment. They must meet specific criteria to be certified acceptable for release. The following tests are performed on each power transformer:

- Resistance Measurement\*
- Voltage Ratio
- Polarity & Phase-Relation Test
- No-Load Loss and Excitation
- Current Test
- Induced Voltage
- Impedance, Voltage & Load Loss Test\*
- Power frequency voltage-withstand each winding
- Other testing available upon customer request

\* typically not performed for units < 500kVA

## Compliance & Approvals

HPS Millennium™ E is CSA Certified and UL Listed to the following standards:

- CSA C22.2 No. 47
- CSA C9-02
- U.L. 1562



Compliant to the following industry standards:

- IEEE-C57.12.01
- IEEE-C57.12.51
- IEEE-C57.12.70
- IEEE-C57.12.91
- CSA 802.2-12
- DOE 10 CFR Part 431: 2010 or 2016
- NRCAN SOR/2018-201 Amd. 14
- NMX-J-351-1-ANCE-2021
- ON Reg. 404/12 (2018)
- IEC 60076 (upon request)
- Seismic qualified per IBC 2018 (ASCE 7-16)/OSHPD

# SELECTION TABLES

## HPS MILLENNIUM E

Medium Voltage Distribution Transformer

### Aluminum Wound

kVA	Voltage Class kV	BIL	Enclosure with Stubs Up Fig. 1				Enclosure with Bus-To-End Fig.2			
			Width Inches [mm]	Depth Inches [mm]	Height Inches [mm]	Weight Lbs [kg]	Width Inches [mm]	Depth Inches [mm]	Height Inches [mm]	Weight Lbs [kg]
225	5	30	49 [1250]	42 [1070]	64 [1630]	2000 [910]	60 [1530]	50 [1270]	82 [2090]	2300 [1050]
	15	60	54 [1380]	47 [1200]	72 [1830]	2400 [1090]	60 [1530]	50 [1270]	82 [2090]	2700 [1230]
	15	95	60 [1530]	50 [1270]	82 [2090]	3000 [1370]	72 [1830]	54 [1380]	91.5 [2330]	3700 [1680]
	25	110	72 [1830]	54 [1380]	91.5 [2330]	4100 [1860]	72 [1830]	60 [1530]	91.5 [2330]	4400 [2000]
	25	125	72 [1830]	60 [1530]	91.5 [2330]	4500 [2050]	72 [1830]	60 [1530]	91.5 [2330]	4900 [2230]
300	34.5	150	90 [2290]	72 [1830]	91.5 [2330]	5500 [2500]	90 [2290]	72 [1830]	91.5 [2330]	5900 [2680]
	5	30	49 [1250]	42 [1070]	64 [1630]	2100 [960]	68 [1730]	50 [1270]	72 [1830]	2400 [1090]
	15	60	68 [1730]	50 [1270]	72 [1830]	2900 [1320]	68 [1730]	50 [1270]	72 [1830]	3200 [1460]
	15	95	72 [1830]	54 [1380]	91.5 [2330]	4000 [1820]	84 [2140]	54 [1380]	91.5 [2330]	4400 [2000]
	25	110	72 [1830]	54 [1380]	91.5 [2330]	4200 [1910]	84 [2140]	60 [1530]	91.5 [2330]	4800 [2180]
500	25	125	84 [2140]	60 [1530]	91.5 [2330]	4800 [2180]	84 [2140]	60 [1530]	91.5 [2330]	5200 [2360]
	34.5	150	90 [2290]	72 [1830]	91.5 [2330]	5700 [2590]	90 [2290]	72 [1830]	91.5 [2330]	6100 [2770]
	5	30	54 [1380]	47 [1200]	72 [1830]	3100 [1410]	78 [1990]	48 [1220]	78 [1990]	3600 [1640]
	15	60	68 [1730]	50 [1270]	72 [1830]	3900 [1770]	78 [1990]	48 [1220]	78 [1990]	4400 [2000]
	15	95	84 [2140]	54 [1380]	91.5 [2330]	5300 [2410]	84 [2140]	54 [1380]	91.5 [2330]	5800 [2640]
750	25	110	84 [2140]	54 [1380]	91.5 [2330]	5700 [2590]	84 [2140]	60 [1530]	91.5 [2330]	6400 [2910]
	25	125	90 [2290]	60 [1530]	91.5 [2330]	6400 [2910]	96 [2440]	72 [1830]	91.5 [2330]	7200 [3270]
	34.5	150	96 [2440]	72 [1830]	91.5 [2330]	7800 [3540]	96 [2440]	72 [1830]	91.5 [2330]	8400 [3820]
	5	30	68 [1730]	50 [1270]	72 [1830]	5000 [2270]	84 [2140]	54 [1380]	91.5 [2330]	6100 [2770]
	15	60	78 [1990]	48 [1220]	78 [1990]	5300 [2410]	90 [2290]	54 [1380]	91.5 [2330]	6400 [2910]
1000	15	95	84 [2140]	54 [1380]	91.5 [2330]	6700 [3040]	96 [2440]	60 [1530]	91.5 [2330]	7600 [3450]
	25	110	84 [2140]	60 [1530]	91.5 [2330]	7000 [3180]	90 [2290]	60 [1530]	91.5 [2330]	7600 [3450]
	25	125	90 [2290]	60 [1530]	91.5 [2330]	7100 [3230]	96 [2440]	72 [1830]	91.5 [2330]	8000 [3630]
	34.5	150	96 [2440]	72 [1830]	91.5 [2330]	9000 [4090]	102 [2600]	72 [1830]	91.5 [2330]	9900 [4500]
	5	30	78 [1990]	48 [1220]	78 [1990]	6100 [2770]	90 [2290]	54 [1380]	91.5 [2330]	7300 [3320]
1500	15	60	84 [2140]	54 [1380]	91.5 [2330]	7200 [3270]	96 [2440]	54 [1380]	91.5 [2330]	8000 [3630]
	15	95	90 [2290]	60 [1530]	91.5 [2330]	8400 [3820]	102 [2600]	60 [1530]	91.5 [2330]	9400 [4270]
	25	110	90 [2290]	60 [1530]	91.5 [2330]	8500 [3860]	96 [2440]	60 [1530]	91.5 [2330]	9300 [4220]
	25	125	96 [2440]	60 [1530]	91.5 [2330]	8700 [3950]	102 [2600]	72 [1830]	91.5 [2330]	9800 [4450]
	34.5	150	96 [2440]	72 [1830]	110 [2800]	10000 [4600]	102 [2600]	72 [1830]	110 [2800]	11000 [5000]
200	5	30	78 [1990]	48 [1220]	78 [1990]	8100 [3680]	96 [2440]	54 [1380]	91.5 [2330]	9500 [4310]
	15	60	90 [2290]	54 [1380]	91.5 [2330]	9600 [4400]	102 [2600]	60 [1530]	91.5 [2330]	10800 [4900]
	15	95	96 [2440]	60 [1530]	91.5 [2330]	10800 [4900]	108 [2750]	60 [1530]	91.5 [2330]	12100 [5500]
	25	110	96 [2440]	60 [1530]	91.5 [2330]	10900 [5000]	108 [2750]	72 [1830]	91.5 [2330]	12500 [5700]
	25	125	102 [2600]	72 [1830]	110 [2800]	11800 [5400]	108 [2750]	72 [1830]	110 [2800]	13000 [5900]
2500	34.5	150	108 [2750]	72 [1830]	110 [2800]	13900 [6400]	120 [3050]	72 [1830]	110 [2800]	15400 [7000]
	5	30	90 [2290]	54 [1380]	91.5 [2330]	10800 [4900]	108 [2750]	60 [1530]	91.5 [2330]	12400 [5700]
	15	60	96 [2440]	54 [1380]	91.5 [2330]	11500 [5300]	108 [2750]	60 [1530]	91.5 [2330]	13000 [5900]
	15	95	102 [2600]	60 [1530]	91.5 [2330]	13400 [6100]	120 [3050]	72 [1830]	91.5 [2330]	15300 [7000]
	25	110	102 [2600]	72 [1830]	91.5 [2330]	13800 [6300]	120 [3050]	72 [1830]	91.5 [2330]	15500 [7100]
	25	125	108 [2750]	72 [1830]	110 [2800]	15000 [6900]	120 [3050]	72 [1830]	110 [2800]	16600 [7600]
	34.5	150	120 [3050]	72 [1830]	110 [2800]	16200 [7400]	120 [3050]	72 [1830]	110 [2800]	17600 [8000]
	5	30	90 [2290]	54 [1380]	91.5 [2330]	13000 [5900]	120 [3050]	60 [1530]	91.5 [2330]	15100 [6900]
	15	60	96 [2440]	60 [1530]	91.5 [2330]	13700 [6300]	120 [3050]	72 [1830]	91.5 [2330]	15800 [7200]
	15	95	108 [2750]	60 [1530]	91.5 [2330]	15800 [7200]	132 [3360]	72 [1830]	110 [2800]	18400 [8400]
	25	110	108 [2750]	72 [1830]	110 [2800]	14900 [6800]	120 [3050]	72 [1830]	110 [2800]	16500 [7500]
	25	125	108 [2750]	72 [1830]	110 [2800]	15900 [7300]	120 [3050]	72 [1830]	110 [2800]	17600 [8000]
	34.5	150	108 [2750]	72 [1830]	110 [2800]	16900 [7700]	132 [3360]	72 [1830]	110 [2800]	19000 [8700]

Weight and dimensions are typical for 150°C Average Winding Rise.  
Weights and dimensions are for DOE 2016, NRCAN 2019 and NMX 2021 compliant product.

All dimensions are in inches and [millimetres]

For Type 2 enclosure styles, add 4 inches to the enclosure depth and 20 lbs to the total weight.

Not for construction purposes. Approval drawings can be provided as needed.

Add 20 inch for ATC up to 110kV BIL designs and 24 inch for ATC with 125/150kV BIL designs.

Add approx. 400 lbs. per ATC.

## SELECTION TABLES

### HPS MILLENNIUM E

Medium Voltage Distribution Transformer

#### Aluminum Wound

kVA	Voltage Class kV	BIL	Enclosure with Stubs Up Fig. 1				Enclosure with Bus-To-End Fig.2			
			Width Inches [mm]	Depth Inches [mm]	Height Inches [mm]	Weight Lbs [kg]	Width Inches [mm]	Depth Inches [mm]	Height Inches [mm]	Weight Lbs [kg]
3000	5	30	90 [2290]	60 [1530]	110 [2800]	15700 [7200]	120 [3050]	60 [1530]	110 [2800]	17900 [8200]
	15	60	96 [2440]	60 [1530]	110 [2800]	17300 [7900]	120 [3050]	72 [1830]	110 [2800]	19800 [9000]
	15	95	102 [2600]	60 [1530]	110 [2800]	19000 [8700]	132 [3360]	72 [1830]	110 [2800]	21700 [9900]
	25	110	102 [2600]	72 [1830]	110 [2800]	20700 [9400]	120 [3050]	72 [1830]	110 [2800]	23100 [10500]
	25	125	108 [2750]	72 [1830]	110 [2800]	22900 [10400]	132 [3360]	72 [1830]	110 [2800]	25600 [11700]
	34.5	150	Consult HPS				Consult HPS			
3750	5	30	Consult HPS				Consult HPS			
	15	60	96 [2440]	60 [1530]	110 [2800]	17800 [8100]	120 [3050]	72 [1830]	110 [2800]	20300 [9300]
	15	95	102 [2600]	60 [1530]	110 [2800]	19500 [8900]	132 [3360]	72 [1830]	135 [3430]	22800 [10400]
	25	110	108 [2750]	72 [1830]	110 [2800]	21400 [9800]	132 [3360]	72 [1830]	135 [3430]	24400 [11100]
	25	125	108 [2750]	72 [1830]	110 [2800]	23900 [10900]	Consult HPS			
	34.5	150	Consult HPS				Consult HPS			
5000	5	30	Consult HPS				Consult HPS			
	15	60	102 [2600]	60 [1530]	110 [2800]	19000 [8700]	120 [3050]	72 [1830]	110 [2800]	21400 [9800]
	15	95	108 [2750]	72 [1830]	135 [3430]	21400 [9800]	132 [3360]	72 [1830]	135 [3430]	23900 [10900]
	25	110	120 [3050]	72 [1830]	135 [3430]	23200 [10600]	132 [3360]	72 [1830]	135 [3430]	25500 [11600]
	25	125	120 [3050]	72 [1830]	135 [3430]	25700 [11700]	Consult HPS			
	34.5	150	Consult HPS				Consult HPS			
7500	5	30	Consult HPS				Consult HPS			
	15	60	120 [3050]	72 [1830]	135 [3430]	21700 [9900]	132 [3360]	72 [1830]	135 [3430]	23900 [10900]
	15	95	120 [3050]	72 [1830]	135 [3430]	23200 [10600]	Consult HPS			
	25	110	120 [3050]	72 [1830]	135 [3430]	24700 [11700]	Consult HPS			
	25	125	Consult HPS				Consult HPS			
	34.5	150	Consult HPS				Consult HPS			

Weight and dimensions are typical for 150°C Average Winding Rise.  
 Weights and dimensions are for NRCan 2019 and NMX 2021 compliant product.  
 All dimensions are in inches and [millimetres]  
 For Type 2 enclosure styles, add 4 inches to the enclosure depth and 20 lbs to the total weight.  
 Not for construction purposes. Approval drawings can be provided as needed.

Add 20 inch for ATC up to 110kV BIL designs and 24 inch for ATC with 125/150kV BIL designs.  
 Add approx. 400 lbs. per ATC.

# SELECTION TABLES

## HPS MILLENNIUM E

Medium Voltage Distribution Transformer

### Copper Wound

kVA	Voltage Class kV	BIL	Enclosure with Stubs Up Fig. 1				Enclosure with Bus-To-End Fig.2			
			Width Inches [mm]	Depth Inches [mm]	Height Inches [mm]	Weight Lbs [kg]	Width Inches [mm]	Depth Inches [mm]	Height Inches [mm]	Weight Lbs [kg]
225	5	30	49 [1250]	42 [1070]	64 [1630]	2000 [910]	60 [1530]	50 [1270]	82 [2090]	2300 [1050]
	15	60	60 [1530]	50 [1270]	82 [2090]	2700 [1230]	68 [1730]	50 [1270]	72 [1830]	2900 [1320]
	15	95	68 [1730]	50 [1270]	72 [1830]	3100 [1410]	72 [1830]	54 [1380]	91.5 [2330]	3900 [1770]
	25	110	68 [1730]	50 [1270]	72 [1830]	3300 [1500]	72 [1830]	54 [1380]	91.5 [2330]	4100 [1860]
	25	125	72 [1830]	54 [1380]	91.5 [2330]	3900 [1770]	72 [1830]	60 [1530]	91.5 [2330]	4200 [1910]
300	34.5	150	90 [2290]	72 [1830]	91.5 [2330]	4800 [2180]	90 [2290]	72 [1830]	91.5 [2330]	5100 [2320]
	5	30	49 [1250]	42 [1070]	64 [1630]	2100 [960]	60 [1530]	50 [1270]	82 [2090]	2400 [1090]
	15	60	60 [1530]	50 [1270]	82 [2090]	3100 [1410]	68 [1730]	50 [1270]	72 [1830]	3400 [1550]
	15	95	68 [1730]	50 [1270]	72 [1830]	3700 [1680]	72 [1830]	54 [1380]	91.5 [2330]	4500 [2050]
	25	110	72 [1830]	54 [1380]	91.5 [2330]	4400 [2000]	84 [2140]	54 [1380]	91.5 [2330]	4900 [2230]
500	25	125	84 [2140]	54 [1380]	91.5 [2330]	4600 [2090]	84 [2140]	60 [1530]	91.5 [2330]	5200 [2360]
	34.5	150	90 [2290]	72 [1830]	91.5 [2330]	5200 [2360]	90 [2290]	72 [1830]	91.5 [2330]	5600 [2550]
	5	30	49 [1250]	42 [1070]	64 [1630]	2800 [1280]	68 [1730]	50 [1270]	72 [1830]	3200 [1460]
	15	60	78 [1990]	48 [1220]	78 [1990]	4400 [2000]	78 [1990]	48 [1220]	78 [1990]	4800 [2180]
	15	95	84 [2140]	54 [1380]	91.5 [2330]	5700 [2590]	84 [2140]	54 [1380]	91.5 [2330]	6200 [2820]
750	25	110	84 [2140]	54 [1380]	91.5 [2330]	5800 [2640]	84 [2140]	60 [1530]	91.5 [2330]	6500 [2950]
	25	125	84 [2140]	60 [1530]	91.5 [2330]	6100 [2770]	84 [2140]	60 [1530]	91.5 [2330]	6600 [3000]
	34.5	150	90 [2290]	72 [1830]	91.5 [2330]	6400 [2910]	96 [2440]	72 [1830]	91.5 [2330]	7000 [3180]
	5	30	60 [1530]	50 [1270]	82 [2090]	4800 [2180]	78 [1990]	48 [1220]	78 [1990]	5300 [2410]
	15	60	78 [1990]	48 [1220]	78 [1990]	5500 [2500]	84 [2140]	54 [1380]	91.5 [2330]	6500 [2950]
1000	15	95	84 [2140]	54 [1380]	91.5 [2330]	6500 [2950]	90 [2290]	60 [1530]	91.5 [2330]	7200 [3270]
	25	110	90 [2290]	54 [1380]	91.5 [2330]	6800 [3090]	96 [2440]	60 [1530]	91.5 [2330]	7600 [3450]
	25	125	90 [2290]	60 [1530]	91.5 [2330]	7000 [3180]	96 [2440]	72 [1830]	91.5 [2330]	7900 [3590]
	34.5	150	96 [2440]	72 [1830]	91.5 [2330]	7500 [3410]	102 [2600]	72 [1830]	91.5 [2330]	8300 [3770]
	5	30	68 [1730]	50 [1270]	72 [1830]	5800 [2640]	84 [2140]	54 [1380]	91.5 [2330]	7000 [3180]
1500	15	60	78 [1990]	48 [1220]	78 [1990]	6500 [2950]	90 [2290]	54 [1380]	91.5 [2330]	7700 [3500]
	15	95	90 [2290]	54 [1380]	91.5 [2330]	8400 [3820]	96 [2440]	60 [1530]	91.5 [2330]	9300 [4220]
	25	110	90 [2290]	60 [1530]	91.5 [2330]	8600 [3910]	96 [2440]	60 [1530]	91.5 [2330]	9400 [4270]
	25	125	90 [2290]	60 [1530]	91.5 [2330]	8700 [3950]	96 [2440]	72 [1830]	91.5 [2330]	9700 [4400]
	34.5	150	96 [2440]	72 [1830]	91.5 [2330]	9200 [4200]	102 [2600]	72 [1830]	91.5 [2330]	10200 [4700]
200	5	30	78 [1990]	48 [1220]	78 [1990]	7900 [3590]	90 [2290]	54 [1380]	91.5 [2330]	9200 [4180]
	15	60	84 [2140]	54 [1380]	91.5 [2330]	8500 [3860]	96 [2440]	54 [1380]	91.5 [2330]	9400 [4270]
	15	95	90 [2290]	54 [1380]	91.5 [2330]	10400 [4800]	102 [2600]	60 [1530]	91.5 [2330]	11700 [5400]
	25	110	96 [2440]	60 [1530]	91.5 [2330]	10800 [4900]	102 [2600]	72 [1830]	91.5 [2330]	12100 [5500]
	25	125	102 [2600]	72 [1830]	91.5 [2330]	12200 [5600]	108 [2750]	72 [1830]	91.5 [2330]	13400 [6100]
2500	34.5	150	102 [2600]	72 [1830]	91.5 [2330]	13800 [6300]	108 [2750]	72 [1830]	91.5 [2330]	15200 [6900]
	5	30	78 [1990]	48 [1220]	78 [1990]	9700 [4400]	96 [2440]	54 [1380]	91.5 [2330]	11300 [5200]
	15	60	84 [2140]	54 [1380]	91.5 [2330]	11100 [5100]	102 [2600]	60 [1530]	91.5 [2330]	12600 [5800]
	15	95	96 [2440]	54 [1380]	91.5 [2330]	12200 [5600]	108 [2750]	60 [1530]	91.5 [2330]	13800 [6300]
	25	110	96 [2440]	60 [1530]	91.5 [2330]	12900 [5900]	108 [2750]	72 [1830]	91.5 [2330]	14700 [6700]
	25	125	102 [2600]	72 [1830]	91.5 [2330]	13900 [6400]	120 [3050]	72 [1830]	91.5 [2330]	15600 [7100]
	34.5	150	108 [2750]	72 [1830]	110 [2800]	17400 [7900]	120 [3050]	72 [1830]	110 [2800]	19200 [8800]
	5	30	84 [2140]	54 [1380]	91.5 [2330]	11300 [5200]	102 [2600]	60 [1530]	91.5 [2330]	12800 [5900]
	15	60	90 [2290]	54 [1380]	91.5 [2330]	12100 [5500]	108 [2750]	60 [1530]	91.5 [2330]	13800 [6300]
	15	95	96 [2440]	54 [1380]	91.5 [2330]	14100 [6400]	120 [2600]	72 [1830]	91.5 [2330]	16400 [7500]
	25	110	96 [2440]	72 [1830]	91.5 [2330]	15100 [6900]	120 [3050]	72 [1830]	91.5 [2330]	17200 [7900]
	25	125	102 [2600]	72 [1830]	110 [2800]	16600 [7600]	120 [3050]	72 [1830]	110 [2800]	18500 [8400]
	34.5	150	108 [2750]	72 [1830]	110 [2800]	18400 [8400]	Consult HPS			

Weight and dimensions are typical for 150°C Average Winding Rise.  
Weights and dimensions are for DOE 2016, NRCAN 2019 and NMX 2021 compliant product.

All dimensions are in inches and [millimetres]

For Type 2 enclosure styles, add 4 inches to the enclosure depth and 20 lbs to the total weight.

Not for construction purposes. Approval drawings can be provided as needed.

Add 20 inch for ATC up to 110kV BIL designs and 24 inch for ATC with 125/150kV BIL designs.

Add approx. 400 lbs. per ATC.



## SELECTION TABLES

### HPS MILLENNIUM E

Medium Voltage Distribution Transformer

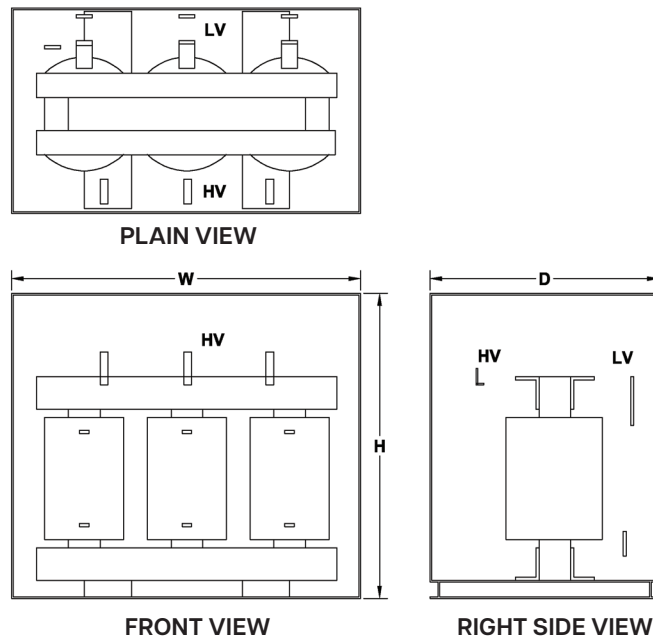
#### Copper Wound

kVA	Voltage Class kV	BIL	Enclosure with Stubs Up Fig. 1				Enclosure with Bus-To-End Fig.2			
			Width Inches [mm]	Depth Inches [mm]	Height Inches [mm]	Weight Lbs [kg]	Width Inches [mm]	Depth Inches [mm]	Height Inches [mm]	Weight Lbs [kg]
3000	5	30	90 [2290]	54 [1380]	91.5 [2330]	15200 [6900]	120 [3050]	60 [1530]	91.5 [2330]	17500 [8000]
	15	60	96 [2440]	54 [1380]	91.5 [2330]	17300 [7900]	120 [3050]	60 [1530]	91.5 [2330]	19700 [9000]
	15	95	102 [2600]	54 [1380]	91.5 [2330]	19500 [8900]	120 [3050]	72 [1830]	91.5 [2330]	22100 [10100]
	25	110	102 [2600]	72 [1830]	91.5 [2330]	21800 [9900]	120 [3050]	72 [1830]	91.5 [2330]	24300 [11100]
	25	125	102 [2600]	72 [1830]	110 [2800]	23700 [10800]	120 [3050]	72 [1830]	110 [2800]	26400 [12000]
	34.5	150	Consult HPS				Consult HPS			
3750	5	30	Consult HPS				Consult HPS			
	15	60	96 [2440]	60 [1530]	110 [2800]	19800 [9000]	120 [3050]	60 [1530]	110 [2800]	22300 [10200]
	15	95	102 [2600]	60 [1530]	110 [2800]	22300 [10200]	120 [3050]	72 [1830]	110 [2800]	25000 [11400]
	25	110	102 [2600]	60 [1530]	110 [2800]	23000 [10500]	120 [3050]	72 [1830]	110 [2800]	25800 [11800]
	25	125	108 [2750]	72 [1830]	110 [2800]	24900 [11300]	132 [3360]	72 [1830]	110 [2800]	27800 [12700]
	34.5	150	120 [3050]	72 [1830]	110 [2800]	26700 [12200]	Consult HPS			
5000	5	30	Consult HPS				Consult HPS			
	15	60	96 [2440]	60 [1530]	110 [2800]	20800 [9500]	108 [2750]	60 [1530]	110 [2800]	23100 [10500]
	15	95	102 [2600]	60 [1530]	110 [2800]	23000 [10500]	120 [3050]	60 [1530]	110 [2800]	25600 [11700]
	25	110	108 [2750]	72 [1830]	135 [3430]	25400 [11600]	120 [3050]	72 [1830]	135 [3430]	28000 [12800]
	25	125	108 [2750]	72 [1830]	135 [3430]	25900 [11800]	120 [3050]	72 [1830]	135 [3430]	28500 [13000]
	34.5	150	Consult HPS				Consult HPS			
7500	5	30	Consult HPS				Consult HPS			
	15	60	102 [2600]	72 [1830]	135 [3430]	23700 [10800]	120 [3050]	72 [1830]	135 [3430]	26300 [12000]
	15	95	108 [2750]	72 [1830]	135 [3430]	25600 [11700]	132 [3360]	72 [1830]	135 [3430]	28500 [13000]
	25	110	120 [3050]	72 [1830]	135 [3430]	26400 [12000]	132 [3360]	72 [1830]	135 [3430]	29000 [13200]
	25	125	120 [3050]	72 [1830]	135 [3430]	27700 [12600]	132 [3360]	72 [1830]	135 [3430]	30500 [13900]
	34.5	150	Consult HPS				Consult HPS			

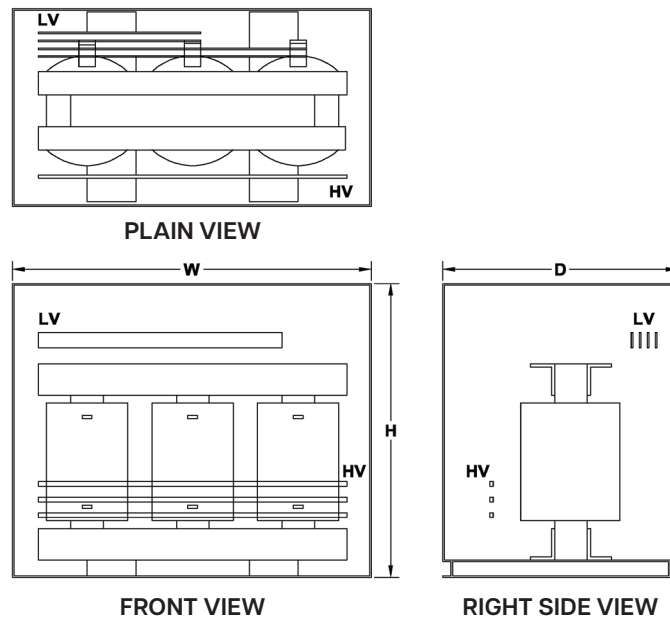
Weight and dimensions are typical for 150°C Average Winding Rise.  
 Weights and dimensions are for NRCan 2019 and NMX 2021 compliant product.  
 All dimensions are in inches and [millimetres]  
 For Type 2 enclosure styles, add 4 inches to the enclosure depth and 20 lbs to the total weight.  
 Not for construction purposes. Approval drawings can be provided as needed

Add 20 inch for ATC up to 110kV BIL designs and 24 inch for ATC with 125/150kV BIL designs.  
 Add approx. 400 lbs. per ATC.

## Enclosure With Stubs Up Fig. 1



## Enclosure With Bus-To-End Fig. 2



# ANTI-VIBRATION PAD & VIBRATION ISOLATOR KITS

## Anti-Vibration Pad and Vibration Isolator Kits

All standard transformers come with installed internal vibration absorbing pads to minimize noise during operation. Optional external “anti-vibration” pad and “vibration isolator” (for higher noise dampening) kits can be used to reduce operating noise even further. All pads are resistant to industrial contaminants like oil, acids and alkalines.

### ANTI-VIBRATION PAD KITS

Part No.	Description
PD1	Set of four (4) rubber anti-vibration pads which replace the standard steel enclosure washers.
PD2	



All anti-vibration pad kits and vibration isolator kits contain a set of four (4) pads or isolators. Therefore only one kit is required per transformer.

### VIBRATION ISOLATOR KITS

Part No.	Transformer Weight Lbs [kg]	Description
NMP1	Up to 340 lbs [154]	Set of four (4) molded neoprene and steel plate assemblies that virtually eliminate vibration noise between the transformer and the mounting surface.
NMP2	341 to 680 lbs [161 to 310 kgs]	
NMP3	681 to 1040 lbs [311 to 480 kgs]	
NMP4	1041 to 1740 lbs [481 to 790 kgs]	
NMP5	1741 to 2330 lbs [791 to 1060kgs]	
NMP6	2331 to 3450 lbs [1061 to 1570 kgs]	
NMP7	3451 to 4690 lbs [1571 to 2130 kgs]	



All anti-vibration pad kits and vibration isolator kits contain a set of four (4) pads or isolators. Therefore only one kit is required per transformer.



## TYPICAL PERFORMANCE DATA

### 5kV, 30kV BIL - Aluminum

75°C, 4160V DELTA (30 KV BIL) -  
480Y/277V, 600Y/347V (10KV BIL), 60 HZ

kVA	No Load Losses (W)	Load Loss (W)	Impedance	Resistance	Reactance	X/R Ratio	Regulation				%Efficiency at different loads			
							at 35% load		at 100% load					
							pf=1	pf=0.8	pf=1	pf=0.8	25%	50%*	75%	100%
225	630	2770	5.7%	1.2%	5.6%	4.64	0.65%	2.18%	1.38%	4.40%	98.56%	98.82%	98.71%	98.50%
300	735	3420	5.7%	1.1%	5.6%	5.10	0.63%	2.16%	1.33%	4.37%	98.72%	98.93%	98.80%	98.60%
500	1020	4925	5.7%	1.0%	5.7%	5.66	0.54%	2.12%	1.17%	4.27%	98.93%	99.09%	98.98%	98.80%
750	1500	6010	5.8%	0.8%	5.7%	7.13	0.44%	2.05%	0.96%	4.15%	99.01%	99.21%	99.14%	99.01%
1000	1790	7145	5.8%	0.7%	5.7%	8.18	0.41%	2.03%	0.90%	4.11%	99.10%	99.28%	99.21%	99.09%
1500	2150	10235	5.8%	0.7%	5.7%	8.19	0.39%	2.02%	0.86%	4.08%	99.26%	99.37%	99.29%	99.17%
2000	2595	12440	5.8%	0.6%	5.7%	9.57	0.35%	1.99%	0.79%	4.03%	99.33%	99.43%	99.36%	99.25%
2500	2785	15460	5.8%	0.6%	5.7%	9.58	0.35%	1.99%	0.78%	4.03%	99.40%	99.47%	99.39%	99.28%

\*Meets DOE 10 CFR PART 431- 2016, NRCAN 2019/ON Reg. 404/12 and NMX-J-351-1-ANCE-2021 Energy Efficiency Regulations for MVD T Transformers

### 5kV, 30kV BIL - Copper

75°C, 4160V DELTA (30 KV BIL) -  
480Y/277V, 600Y/347V (10KV BIL), 60 HZ

kVA	No Load Losses (W)	Load Loss (W)	Impedance	Resistance	Reactance	X/R Ratio	Regulation				%Efficiency at different loads			
							at 35% load		at 100% load					
							pf=1	pf=0.8	pf=1	pf=0.8	25%	50%*	75%	100%
225	575	3070	5.6%	1.3%	5.4%	4.17	0.72%	2.19%	1.51%	4.40%	98.65%	98.82%	98.65%	98.41%
300	690	3720	5.6%	1.2%	5.5%	4.56	0.66%	2.15%	1.39%	4.34%	98.79%	98.93%	98.78%	98.55%
500	900	5550	5.6%	1.1%	5.5%	5.01	0.59%	2.12%	1.26%	4.27%	99.01%	99.09%	98.94%	98.73%
750	1475	6050	5.7%	0.8%	5.6%	7.00	0.44%	2.02%	0.96%	4.09%	99.02%	99.21%	99.14%	99.01%
1000	1650	7840	5.7%	0.8%	5.6%	7.01	0.43%	2.02%	0.94%	4.07%	99.15%	99.28%	99.20%	99.06%
1500	1910	11240	5.7%	0.7%	5.6%	8.02	0.41%	2.01%	0.91%	4.05%	99.31%	99.37%	99.27%	99.13%
2000	2265	13750	5.7%	0.7%	5.6%	8.05	0.38%	1.99%	0.85%	4.01%	99.38%	99.43%	99.34%	99.21%
2500	2570	16310	5.7%	0.6%	5.6%	9.40	0.37%	1.97%	0.81%	3.99%	99.43%	99.47%	99.38%	99.25%

\*Meets DOE 10 CFR PART 431- 2016, NRCAN 2019/ON Reg. 404/12 and NMX-J-351-1-ANCE-2021 Energy Efficiency Regulations for MVD T Transformers

## TYPICAL PERFORMANCE DATA

### 15kV, 60kV BIL - Aluminum

75°C, 12470V DELTA (60 KV BIL) -  
480Y/277V, 600Y/347V (10KV BIL), 60 HZ

kVA	No Load Losses (W)	Load Loss (W)	Impedance	Resistance	Reactance	X/R Ratio	Regulation				%Efficiency at different loads			
							at 35% load		at 100% load					
							pf=1	pf=0.8	pf=1	pf=0.8	25%	50%*	75%	100%
225	630	2770	5.7%	1.2%	5.6%	4.64	0.65%	2.18%	1.38%	4.40%	98.56%	98.82%	98.71%	98.50%
300	735	3420	5.7%	1.1%	5.6%	5.10	0.63%	2.16%	1.33%	4.37%	98.72%	98.93%	98.80%	98.60%
500	1020	4925	5.7%	1.0%	5.7%	5.66	0.54%	2.12%	1.17%	4.27%	98.93%	99.09%	98.98%	98.80%
750	1500	6010	5.8%	0.8%	5.7%	7.13	0.44%	2.05%	0.96%	4.15%	99.01%	99.21%	99.14%	99.01%
1000	1790	7145	5.8%	0.7%	5.7%	8.18	0.41%	2.03%	0.90%	4.11%	99.10%	99.28%	99.21%	99.09%
1500	2150	10235	5.8%	0.7%	5.7%	8.19	0.39%	2.02%	0.86%	4.08%	99.26%	99.37%	99.29%	99.17%
2000	2595	12440	5.8%	0.6%	5.7%	9.57	0.35%	1.99%	0.79%	4.03%	99.33%	99.43%	99.36%	99.25%
2500	2785	15460	5.8%	0.6%	5.7%	9.58	0.35%	1.99%	0.78%	4.03%	99.40%	99.47%	99.39%	99.28%

\*Meets DOE 10 CFR PART 431- 2016, NRCAN 2019/ON Reg. 404/12 and NMX-J-351-1-ANCE-2021 Energy Efficiency Regulations for MVDT Transformers

### 15kV, 60kV BIL - Copper

75°C, 12470V DELTA (60 KV BIL) -  
480Y/277V, 600Y/347V (10KV BIL), 60 HZ

kVA	No Load Losses (W)	Load Loss (W)	Impedance	Resistance	Reactance	X/R Ratio	Regulation				%Efficiency at different loads			
							at 35% load		at 100% load					
							pf=1	pf=0.8	pf=1	pf=0.8	25%	50%*	75%	100%
225	750	2725	5.6%	1.2%	5.5%	4.55	0.64%	2.14%	1.36%	4.32%	98.29%	98.69%	98.63%	98.45%
300	950	3425	5.6%	1.0%	5.5%	5.54	0.61%	2.13%	1.29%	4.29%	98.47%	98.81%	98.74%	98.56%
500	1240	5215	5.6%	1.0%	5.5%	5.54	0.56%	2.10%	1.20%	4.23%	98.76%	98.99%	98.90%	98.73%
750	1540	7115	5.6%	0.9%	5.6%	6.18	0.51%	2.07%	1.10%	4.17%	98.95%	99.12%	99.02%	98.86%
1000	1800	8980	5.7%	0.9%	5.6%	6.20	0.49%	2.05%	1.05%	4.14%	99.08%	99.21%	99.10%	98.94%
1500	2485	11215	5.7%	0.8%	5.6%	7.02	0.41%	2.00%	0.91%	4.05%	99.16%	99.30%	99.22%	99.09%
2000	2860	14695	5.7%	0.7%	5.6%	8.03	0.41%	2.00%	0.89%	4.04%	99.25%	99.35%	99.26%	99.13%
2500	3015	18025	5.7%	0.7%	5.6%	8.04	0.40%	2.00%	0.88%	4.04%	99.34%	99.40%	99.30%	99.17%

\*Meets DOE 10 CFR PART 431- 2016, NRCAN 2019/ON Reg. 404/12 and NMX-J-351-1-ANCE-2021 Energy Efficiency Regulations for MVDT Transformers

## TYPICAL PERFORMANCE DATA

### 5kV, 95kV BIL - Aluminum

75°C, 12470V DELTA (95 KV BIL) -  
480Y/277V, 600Y/347V (10KV BIL), 60 HZ

kVA	No Load Losses (W)	Load Loss (W)	Impedance	Resistance	Reactance	X/R Ratio	Regulation				%Efficiency at different loads			
							at 35% load		at 100% load					
							pf=1	pf=0.8	pf=1	pf=0.8	25%	50%*	75%	100%
225	930	2240	5.7%	1.0%	5.7%	5.65	0.51%	1.28%	1.04%	2.57%	98.13%	98.69%	98.72%	98.61%
300	1050	3005	5.7%	1.0%	5.7%	5.65	0.51%	1.28%	1.04%	2.57%	98.38%	98.81%	98.80%	98.67%
500	1350	4820	5.7%	1.0%	5.7%	5.66	0.53%	1.32%	1.09%	2.65%	98.75%	98.99%	98.90%	98.72%
750	1750	6280	5.8%	0.8%	5.7%	7.12	0.45%	1.57%	0.94%	3.15%	98.89%	99.12%	99.06%	98.92%
1000	2275	7050	5.8%	0.7%	5.7%	8.18	0.37%	1.52%	0.78%	3.06%	98.93%	99.20%	99.18%	99.09%
1500	2850	9620	5.8%	0.6%	5.7%	9.57	0.35%	1.60%	0.74%	3.22%	99.09%	99.30%	99.27%	99.18%
2000	3350	12465	5.8%	0.6%	5.7%	9.57	0.37%	1.70%	0.79%	3.43%	99.23%	99.36%	99.29%	99.17%
2500	3900	14235	5.8%	0.5%	5.8%	11.51	0.33%	1.68%	0.72%	3.39%	99.26%	99.41%	99.35%	99.25%

\*Meets DOE 10 CFR PART 431- 2016, NRCAN 2019/ON Reg. 404/12 and NMX-J-351-1-ANCE-2021 Energy Efficiency Regulations for MVD T Transformers

### 15kV, 95kV BIL - Copper

75°C, 12470V DELTA (95 KV BIL) -  
480Y/277V, 600Y/347V (10KV BIL), 60 HZ

kVA	No Load Losses (W)	Load Loss (W)	Impedance	Resistance	Reactance	X/R Ratio	Regulation				%Efficiency at different loads			
							at 35% load		at 100% load					
							pf=1	pf=0.8	pf=1	pf=0.8	25%	50%*	75%	100%
225	850	2570	5.6%	1.1%	5.5%	4.83	0.60%	2.02%	1.28%	4.06%	98.23%	98.69%	98.66%	98.50%
300	1000	3235	5.6%	1.1%	5.5%	4.98	0.58%	2.11%	1.23%	4.25%	98.42%	98.81%	98.76%	98.61%
500	1425	4450	5.7%	0.9%	5.6%	6.27	0.49%	2.08%	1.05%	4.21%	98.66%	98.99%	98.96%	98.84%
750	1725	6400	5.7%	0.9%	5.6%	6.58	0.47%	2.23%	1.05%	4.50%	98.88%	99.12%	99.06%	98.93%
1000	2040	7890	5.7%	0.8%	5.6%	7.19	0.44%	2.21%	0.98%	4.46%	99.00%	99.20%	99.14%	99.02%
1500	2610	10700	5.7%	0.7%	5.6%	7.92	0.41%	2.18%	0.91%	4.41%	99.13%	99.30%	99.24%	99.12%
2000	3070	13550	5.7%	0.7%	5.6%	8.41	0.39%	2.17%	0.87%	4.39%	99.22%	99.36%	99.29%	99.18%
2500	3600	15480	5.7%	0.6%	5.6%	9.11	0.36%	2.15%	0.81%	4.35%	99.27%	99.41%	99.35%	99.24%

\*Meets DOE 10 CFR PART 431- 2016, NRCAN 2019/ON Reg. 404/12 and NMX-J-351-1-ANCE-2021 Energy Efficiency Regulations for MVD T Transformers



## TYPICAL PERFORMANCE DATA

### 25kV, 125kV BIL - Aluminum

75°C, 24940V DELTA (125 KV BIL) -  
480Y/277V, 600Y/347V (10KV BIL), 60 HZ

kVA	No Load Losses (W)	Load Loss (W)	Impedance	Resistance	Reactance	X/R Ratio	Regulation				%Efficiency at different loads			
							at 35% load		at 100% load					
							pf=1	pf=0.8	pf=1	pf=0.8	25%	50%*	75%	100%
225	950	2714	5.7%	1.2%	5.6%	4.65	0.64%	2.17%	1.36%	4.38%	98.05%	98.57%	98.55%	98.40%
300	1165	3280	5.7%	1.1%	5.6%	5.11	0.59%	2.14%	1.25%	4.32%	98.21%	98.69%	98.68%	98.54%
500	1535	5038	5.7%	1.0%	5.6%	5.65	0.54%	2.12%	1.17%	4.27%	98.54%	98.89%	98.85%	98.70%
750	2000	6868	5.7%	0.9%	5.7%	6.31	0.50%	2.09%	1.08%	4.22%	98.72%	99.02%	98.97%	98.83%
1000	2460	8045	5.8%	0.8%	5.7%	7.13	0.44%	2.05%	0.97%	4.15%	98.83%	99.11%	99.08%	98.96%
1500	3115	11312	5.8%	0.7%	5.7%	8.17	0.42%	2.04%	0.92%	4.12%	98.99%	99.21%	99.16%	99.05%
2000	4015	12822	5.8%	0.7%	5.7%	8.20	0.36%	2.00%	0.81%	4.05%	99.05%	99.28%	99.26%	99.17%
2500	4200	17000	5.8%	0.7%	5.7%	8.19	0.38%	2.01%	0.84%	4.07%	99.17%	99.33%	99.27%	99.16%

\*Meets DOE 10 CFR PART 431- 2016, NRCAN 2019/ON Reg. 404/12 and NMX-J-351-1-ANCE-2021 Energy Efficiency Regulations for MVD T Transformers

### 25kV, 125kV BIL - Copper

75°C, 24940V DELTA (125 KV BIL) -  
480Y/277V, 600Y/347V (10KV BIL), 60 HZ

kVA	No Load Losses (W)	Load Loss (W)	Impedance	Resistance	Reactance	X/R Ratio	Regulation				%Efficiency at different loads			
							at 35% load		at 100% load					
							pf=1	pf=0.8	pf=1	pf=0.8	25%	50%*	75%	100%
225	900	2920	5.6%	1.3%	5.4%	4.14	0.69%	2.17%	1.45%	4.37%	98.11%	98.57%	98.52%	98.33%
300	1115	3500	5.6%	1.2%	5.5%	4.58	0.62%	2.13%	1.32%	4.30%	98.25%	98.69%	98.65%	98.48%
500	1525	5085	5.6%	1.0%	5.5%	5.55	0.55%	2.09%	1.17%	4.21%	98.55%	98.89%	98.84%	98.70%
750	1955	7100	5.6%	0.9%	5.6%	6.18	0.51%	2.07%	1.10%	4.17%	98.74%	99.02%	98.95%	98.81%
1000	2340	8520	5.6%	0.8%	5.6%	6.99	0.47%	2.04%	1.01%	4.12%	98.86%	99.11%	99.06%	98.93%
1500	3280	10730	5.7%	0.7%	5.6%	8.04	0.40%	1.99%	0.87%	4.03%	98.96%	99.21%	99.18%	99.07%
2000	3650	14600	5.7%	0.7%	5.6%	8.03	0.40%	2.00%	0.89%	4.04%	99.10%	99.28%	99.22%	99.10%
2500	4050	17740	5.7%	0.7%	5.6%	8.04	0.39%	1.99%	0.87%	4.03%	99.18%	99.33%	99.26%	99.14%

\*Meets DOE 10 CFR PART 431- 2016, NRCAN 2019/ON Reg. 404/12 and NMX-J-351-1-ANCE-2021 Energy Efficiency Regulations for MVD T Transformers

## TECHNICAL INFORMATION

The following information is provided for reference only

### Average Audible Sound Levels

Self -Cooled		Ventilated Forced Air Cooled	
Equivalent Two-Winding (kVA)	Ventilated (Class AA Rating)	Equivalent Two-Winding (kVA)	Class FA and AFA Rating
0-9	40	0-1167	67
10-50	45	1168-1667	68
51-150	50	1668-2000	69
151-300	55	2001-3333	71
301-500	60	3334-5000	73
501-700	62	5001-6667	74
701-1000	64	6668-8333	75
1001-1500	65	8334-10000	78
1501-2000	66		
2001-3000	68		
3001-4000	70		
4001-5000	71		
5001-6000	72		
6001-7500	75		

### System Voltage and Transformer BIL Rating

Nominal L-L System Voltage	Low Frequency Voltage Insulation Level	Basic lightning impulse insulation levels (BIL ratings) in common use kV crest <sup>a,b</sup> (1.2 x 50 µs)															
		(kV)	(kV rms)	10	20	30	45	60	95	110	125	150	200	250	300	350	
0.25	2.5	None															
0.6	3	S	1	1													
1.2	4	S	1	1													
2.5	10			S	1	1											
5.0	12				S	1	1										
8.7	20					S	1	1									
15.0	34						S	1	1								
18.0	40							S	1	1							
25.0	50								2	S	1	1					
34.5	70											2	S	1			
46.0	95													S	1	1	
69.0	140														S	1	1
Chopped wave <sup>c,d</sup> minimum time to flashover µs		1.0	1.0	1.0	1.25	1.5	1.6	1.8	2.0	2.25	2.7	3.0	3.0	3.0			

When performing an impulse test on the low voltage windings, the high voltage windings may experience higher test voltage than the rated BIL level.

Note - The latest edition of IEEE Std. C62.22™ [B3] should be consulted for information coordination with available surge arrester protection levels.

S = Standard values

1 = Optional higher levels where exposure to overvoltages occurs and improved protective margins are required.

2 = Optional lower levels where protective characteristics of applied surge arresters have been evaluated and found to provide appropriate surge protection.

a = Low-impedance low-side windings may be tested with a much faster 0.5 x 1.5 µs impulse wave on BIL ratings less than or equal to 30 kV.

b = A positive impulse wave shall be used.

c = The voltage crest of the chopped wave should be approximately the same as the full wave magnitude.

d = No chopped waves are required on 0.6 kV systems and below.

## TECHNICAL INFORMATION

The following information is provided for reference only

### Standard Transformer Ratings, Primary Voltage Class 2.3-46 kV

kVA 3 Phase			Secondary Voltage			
Self-Cooled	Fan-Cooled Ventilated Dry	Fan-Cooled Weather Resistant Ventilated	208Y/120 V 240 V Delta	480Y/277 V 480V Delta	4160Y/2400 V 4160 V Delta 2400 V Delta	600Y/277 V 600V Delta
225			X	X		X
300	400	400	X	X		X
500	667	667	X	X	X	X
750	1000	1000	X	X	X	X
1000	1333	1333	X	X	X	X
1500	2000	2000	X	X	X	X
2000	2666	2666		X	X	X
2500	3333	3333		X	X	X
3750	5000	5000			X	
5000	6650	6650			X	
7500	10000	10000			X	

The above combinations are based on standard designs. Other than standard designs may place further restrictions on the availability of voltage and kVA combinations. Consult factory for final determination.

### Altitude Derating Factor

Altitude (FT)	kVA Correction	BIL Correction
3300	1.00	1.00
4000	0.994	0.98
5000	0.985	0.95
6000	0.975	0.92
7000	0.966	0.89
8000	0.957	0.86
9000	0.948	0.83
10,000	0.939	0.80
11,000	0.930	0.77
12,000	0.921	0.75
13,000	0.912	0.72
14,000	0.903	0.70
15,000	0.894	0.67

Per IEEE 100m = 330 ft







### Energy Efficient General Purpose Distribution Transformer

Generally used for supplying appliance, lighting, heating, motorized machine and power loads from electrical distribution systems.

**Standard features include:**

#### HPS Sentinel™

- Meets C802.2 (2012) efficiencies per Canadian Energy Efficiency Regulations SOR/94-651

#### HPS Sentinel™ G

- Meets new DOE 2016, NRCAN 2019, ON Reg. 404/12 and NMX 2021 efficiency standards
- 10kV BIL on all transformers



### Energy Efficient K-Factor Transformers

The use of K-factor distribution transformers has become a popular means of supplying power for non-linear loads such as electronic ballasts, drives, personal computers, telecommunications equipment, broadcasting equipment and other similar power electronics. These non-linear loads generate harmonic currents which can substantially increase transformer losses. Our K-rated transformers have been specifically designed to prevent failure due to overheating.

**Standard features include:**

#### HPS Synergy™

- K-Factor ratings of K4, K9, K13 and K20
- Meets C802.2 (2012) efficiencies per Canadian Energy Efficiency Regulations SOR/94-651

#### HPS Sentinel™ K

- K-Factor ratings of K4, K9, K13 and K20
- Meets new DOE 2016, NRCAN 2019, ON Reg. 404/12 and NMX 2021 efficiency standards
- 10kV BIL on all transformers



### Energy Efficient Harmonic Mitigating Transformers

HPS Harmonic Mitigating transformers reduce voltage distortion (flat-topping) and power losses due to current harmonics created by single-phase, non-linear loads such as computer equipment. They treat sequence harmonics (3rd, 9th and 15th) within the secondary windings and 5th and 7th harmonics upstream with appropriate phase shifting. Typical applications of severe non-linear loading conditions include data centers, internet-service providers, telecom sites, call centers, broadcast centers, etc.

**Standard features include:**

#### HPS Centurion™

- Meets C802.2 (2012) efficiencies per Canadian Energy Efficiency Regulations SOR/94-651

#### HPS Sentinel™ H

- K-Factor rating of K13 (others available on request)
- Meets new DOE 2016, NRCAN 2019, ON Reg. 404/12 and NMX 2021 efficiency standards
- 10kV BIL on all transformers





### Energy Efficient Drive Isolation Transformers

HPS drive isolation transformers are suitable for both AC and DC variable speed drives. They are sized to match standard motor horsepower and voltage ratings.

**Standard features include:**

- Three phase ratings from 7 kVA to 660 kVA
- Copper and aluminum available
- Optional shield available
- UL Listed and CSA Certified
- Type 3R enclosure (optional type 4, 12 or stainless)

**HPS Tribune™**

- Meets TP1 and C802.2-12 efficiencies

**HPS Tribune™ E**

- Meets NRCAN 2019 & ON Reg. 404/12 efficiency standards

### HPS EnduraCoil™ Cast Resin Transformers

HPS EnduraCoil™ is a high-performance cast resin product designed for many demanding and diverse applications. Coils are precision wound with copper or aluminum conductors that are electrically balanced to minimize axial forces during short-circuit conditions.

**Standard features include:**

- kVA ratings from 300 to 3000 ANN, 4000 AFN, up to 34.5 kV Class
- Enclosure options (Type 1, 2, 3R, 3RE Plus, 4, 12; other paint colors or stainless steel)

**Multiple standard options**

- UL listed and CSA certified

**HPS EnduraCoil™**

- Meets Canadian Energy Efficiency Regulations SOR/94-651 efficiency levels at 50% of rated load

**HPS EnduraCoil™ E**

- Meets new DOE 2016, NRCAN 2019, ON Reg. 404/12 and NMX 2021 efficiency standards



### HPS Millennium™ Energy Efficient Medium Voltage Distribution Transformer

5 kV class transformers are designed to step down incoming high voltage power to utilize voltages for commercial, institutional or industrial applications.

**Standard features include:**

- Large variety of standard and custom single phase and three phase voltages and kVA ratings
- Standard primary voltages of 2400 and 4160 volts
- UL Listed and CSA Certified
- Type 3R, 3RE Plus and ANSI 61 enclosure (optional Type 4, 12; other paint colors or stainless steel)

**HPS Millennium™**

- Meets CSA C802.2-12 efficiency standards at 50% of rated load

**HPS Millennium™ G**

- Meets new DOE 2016, NRCAN 2019, ON Reg. 404/12 and NMX 2021 efficiency standards





## CANADA

### Hammond Power Solutions

595 Southgate Drive  
Guelph, Ontario N1G 3W6  
Tel: (519) 822-2441 | Fax: (519) 822-9701  
Toll Free: 1-888-798-8882

[sales@hammondpowersolutions.com](mailto:sales@hammondpowersolutions.com)



## UNITED STATES

### Hammond Power Solutions

1100 Lake Street  
Baraboo, Wisconsin 53913-2866  
Tel: (608) 356-3921 | Fax: (608) 355-7623  
Toll Free: 1-866-705-4684

[sales@hammondpowersolutions.com](mailto:sales@hammondpowersolutions.com)



## MEXICO

### Hammond Power Solutions Latin America S.

Av. No. 800,  
Parque Industrial Guadalupe  
Guadalupe, NL, Mexico, C.P. 67190.  
Tel: (819) 690-8000

[sales@hammondpowersolutions.com](mailto:sales@hammondpowersolutions.com)



## ASIA

### Hammond Power Solutions Pvt. Ltd.

Plot No 6A, Phase -1, IDA,  
Pashamylaram, Patancheru (M)  
Sangareddy, 502 307, India  
Tel: +91-994-995-0009

[marketing-india@hammondpowersolutions.com](mailto:marketing-india@hammondpowersolutions.com)

## EMEA (SALES OFFICE)

### Hammond Power Solutions SpA

Tel: +49 (152) 08800468

[sales-emea@hammondpowersolutions.com](mailto:sales-emea@hammondpowersolutions.com)

